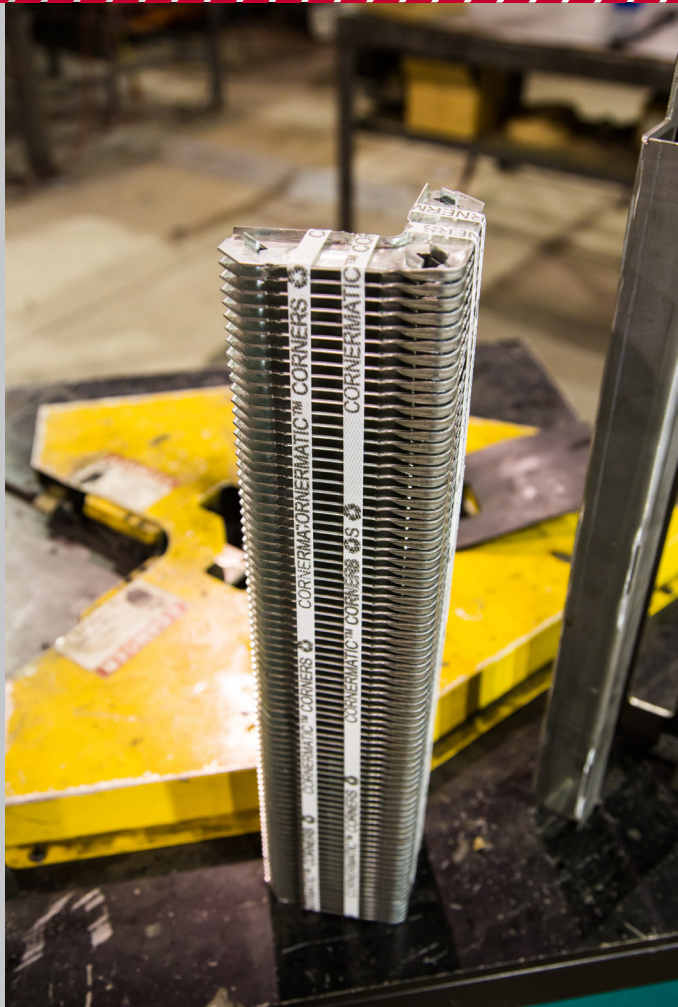


Strap-Pak™ Cornermatic® Chute Replacement

US Patent No. 9,377,213

Installation Guide



DUCTMATE®
Industries, Inc.

1-800-245-3188

www.ductmate.com

ductmate@ductmate.com

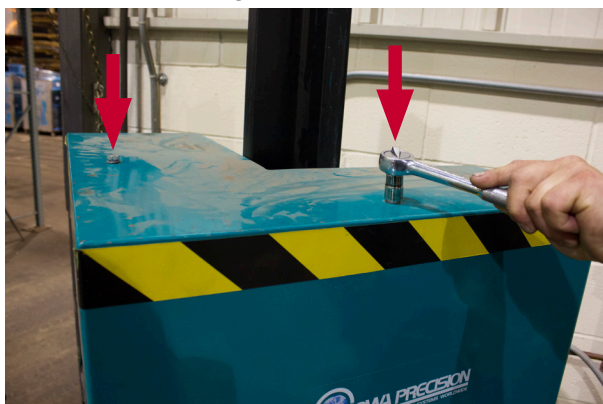
Strap-Pak™ Cornermatic® Chute Replacement

Dual Head Installation Guide

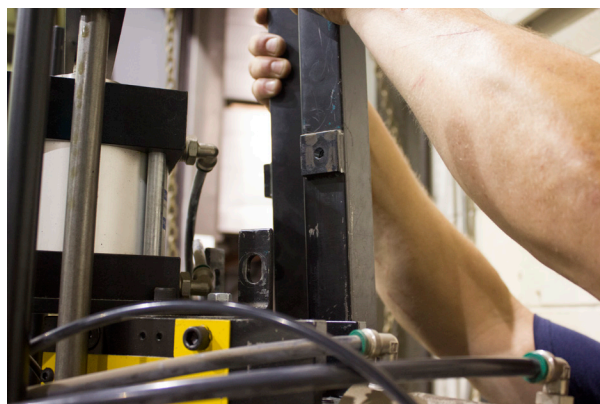
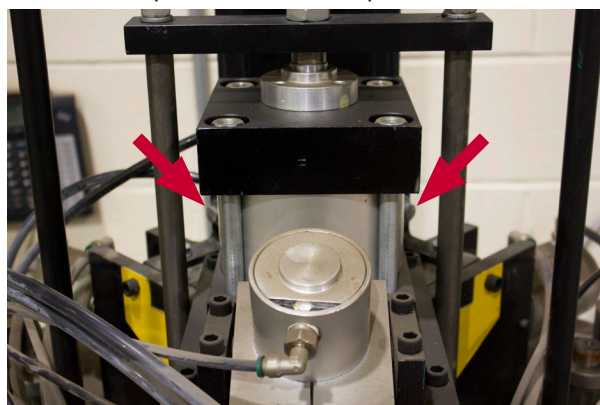
Step 1: Begin by turning off and unplugging the power as well as bleed off any air pressure to ensure the machine is off before removing any parts.



Step 2: Remove any remaining corners from chutes and take off the top cover by removing the two bolts.



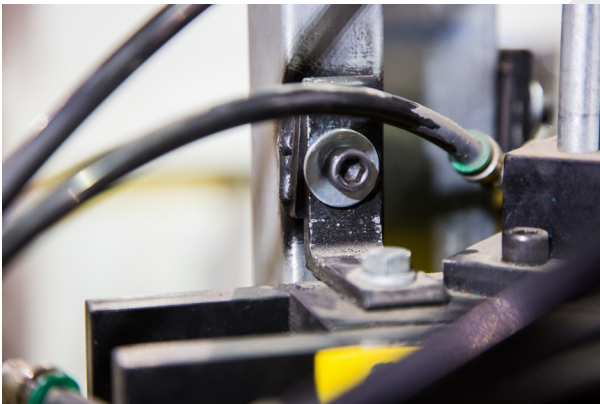
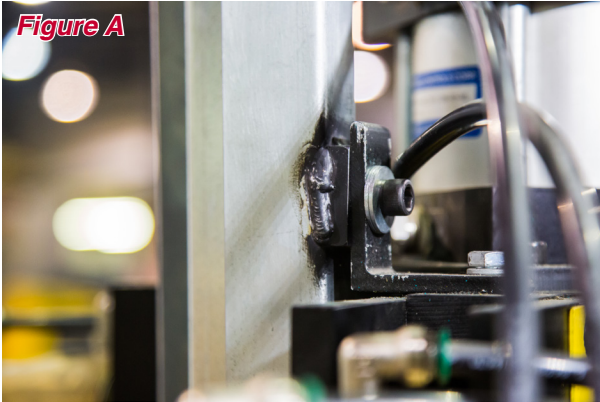
Step 3: To replace the top chute, remove the two bolts holding it in place. Then pull up to release the top chute.



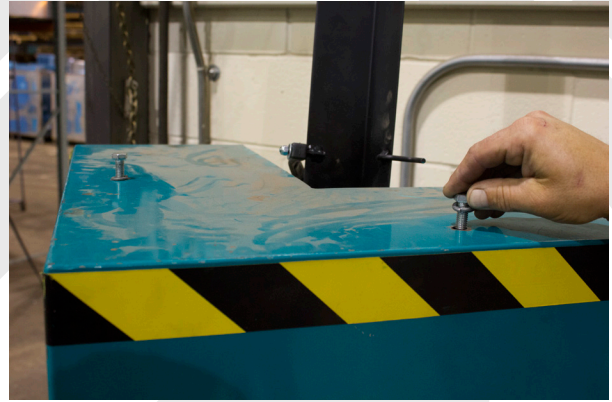
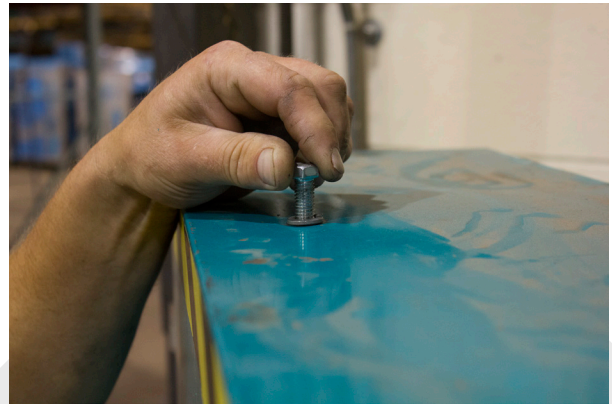
Step 4: Install the new Strap-Pak™ Cornermatic top chute by sliding it into place and install bolts and tighten. Refer to **Figure A** below for correct bracket alignment and orientation.



Figure A



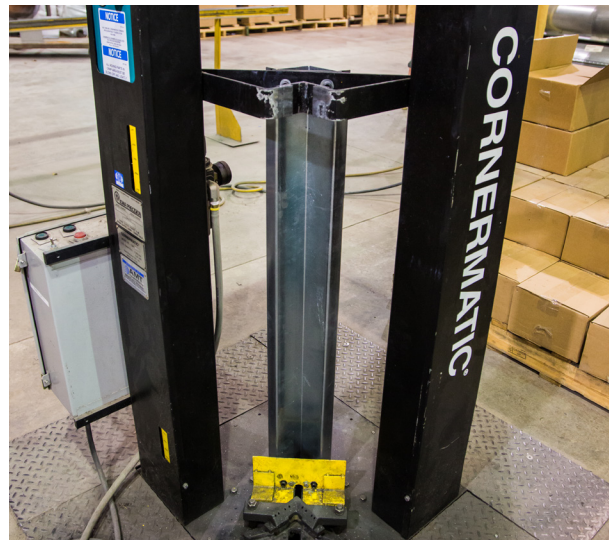
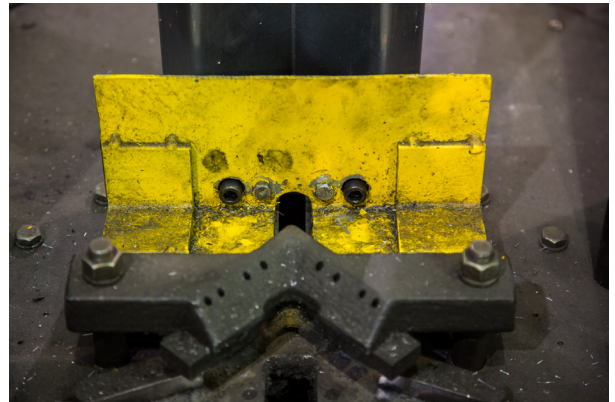
Step 5: Reinstall the top cover and secure it with the two original bolts.



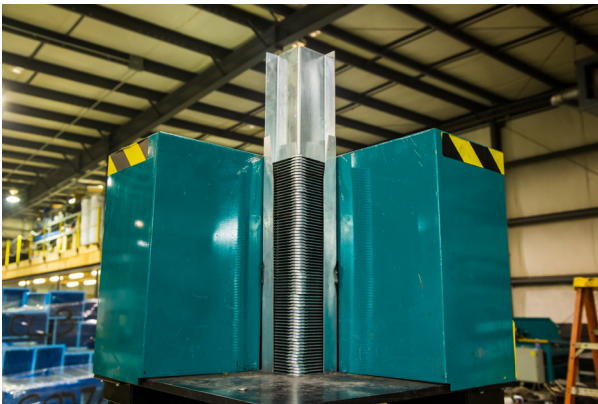
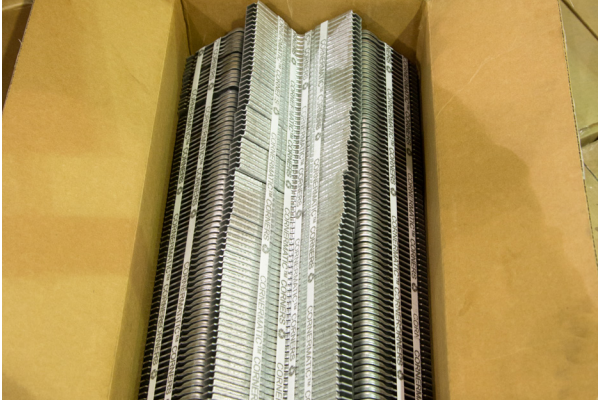
Step 6: To replace the bottom chute, remove the four bolts holding it in place and slide out the bottom chute.



Step 7: Install the new Strap-Pak™ Cornermatic bottom chute by sliding it into place. After the chute is in place insert 4 perimeter bolts and tighten to secure the chute to the machine.



Step 8: Remove a banded stack of Strap-Pak™ corners from the Master Carton and slide them into place on both the upper and lower chutes. Once in place simply cut the four bands on each stack and pull them free.



Step 9: To finish the installation, plug in and turn on the power as well the air pressure. Test the machine to ensure proper operation.



Strap-Pak™ Cornermatic® Chute Replacement

Cornermatic® Plus Installation Guide

Step 1: Begin by unplugging the power to ensure the machine is off before removing any parts.



Step 2: Slide the new Strap-Pak insert all of the way into the Cornermatic Plus machine see **Figure 2** for proper orientation. Remove a banded stack of Strap-Pak corners from the Master Carton and slide them into the Cornermatic Plus machine. Once in place simply cut the four bands and pull them free.



Charleroi, PA **Lodi, CA**
210 Fifth Street 810 S. Cluff Avenue
Charleroi, PA 15022 Lodi, CA 95240-9141
724-258-0500 209-333-4680

*Additional Manufacturing and Warehousing in
Monongabala, PA and Tulsa, OK*

1-800-245-3188 • www.ductmate.com

© Copyright Ductmate Industries, Inc. All rights reserved.